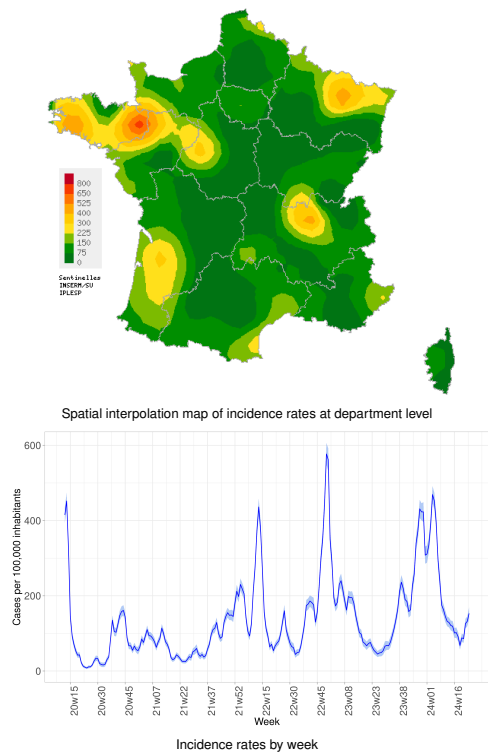


Observed situation in general practice for the week 24 of the year 2024, from 06/10/2024 to 06/16/2024

### Acute Respiratory Infection (ARI)

Covid-19, Influenza and other respiratory viruses

Low activity in general practice



In mainland France, last week (2024w24), the incidence rate of ARI cases consulting in general practice was estimated at **153 cases per 100,000 population (95% CI [137; 169])**.

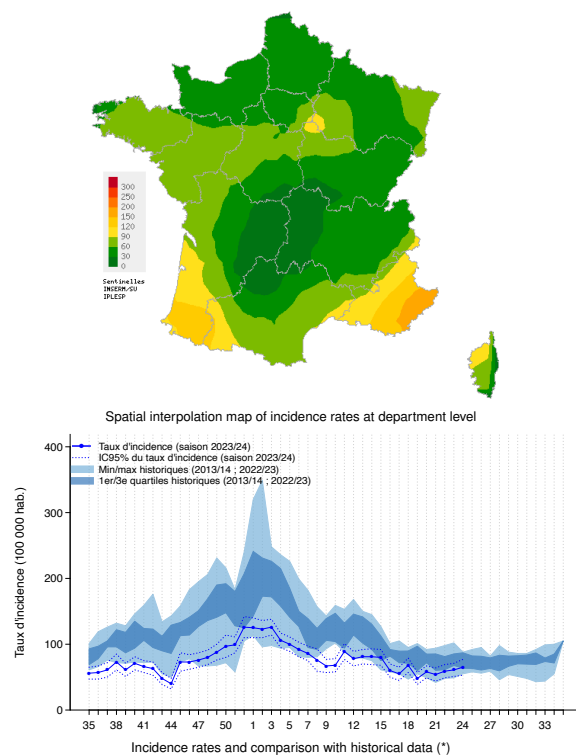
Subject to future data consolidation, this rate is **stable** compared to the previous week (consolidated data for 2024w23: 132 [119; 145]).

You will find more detailed information on ARI on page 2 and complete national and regional data on page 3 of this bulletin.

ARI are caused by a variety of respiratory viruses including SARS-CoV-2 (Covid-19), influenza viruses, and other respiratory viruses such as RSV, rhinovirus and metapneumovirus. The purpose of ARI surveillance is to monitor outbreaks of these virus.

### Acute diarrhea

Low activity in general practice



In mainland France, last week (2024w24), the incidence rate of acute diarrhea cases seen in general practice was estimated at **65 cases per 100,000 population (95% CI [53; 77])**.

Subject to future data consolidation, this rate is **stable** compared to the previous week (consolidated data for 2024w23: 61 [51; 71]) and corresponds to a similar activity level as those usually observed at this time of the year.

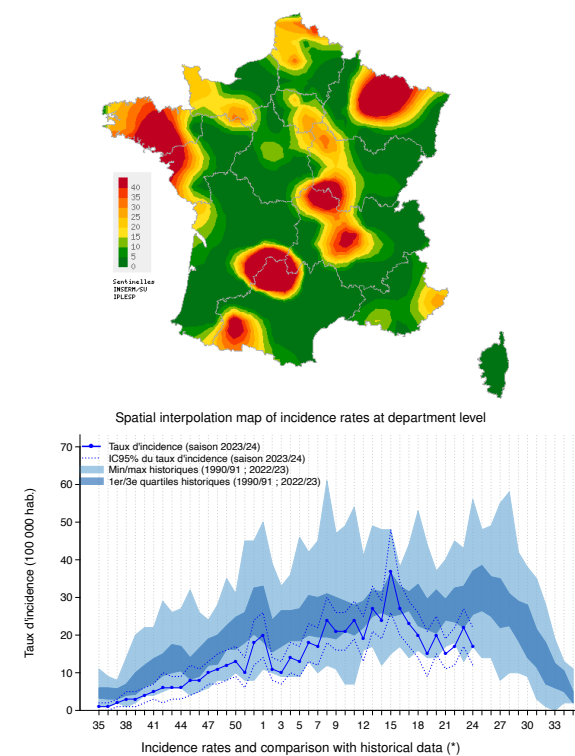
Complete national and regional data are available on the last page of this bulletin.

The purpose of acute diarrhea surveillance is to monitor gastroenteritis outbreaks.

(\*) Incidences of acute diarrhea were greatly reduced march 2020 and august 2021 by containment and sanitary measures to control the Covid-19 pandemic. They are not included in historical comparisons.

### Chickenpox

Low activity in general practice



In mainland France, last week (2024w24), the incidence rate of Chickenpox cases seen in general practice was estimated at **17 cases per 100,000 population (95% CI [12; 22])**.

Subject to future data consolidation, this rate is **decreasing** compared to the previous week (consolidated data for 2024w23: 22 [17; 27]) and corresponds to a **lower activity level** than those usually observed at this time of the year.

Complete national and regional data are available on the last page of this bulletin.

(\*) Incidences of Chickenpox cases during the 2019/2020 and 2020/2021 seasons were greatly reduced by the Covid-19 pandemic containment and health measures. They are not included in historical comparisons.

Observed situation in general practice for the week 24 of the year 2024, from 06/10/2024 to 06/16/2024

## Acute respiratory infection (ARI) - Additional data

### Modalities of ARI monitoring by the Sentinelles Network

Every year, viruses with respiratory tropism circulate in mainland France causing acute respiratory infections (ARI). These viruses are mainly **SARS-CoV-2 (COVID-19)**, **respiratory syncytial virus (RSV)**, **influenza viruses**, **rhinovirus** and **metapneumovirus**.

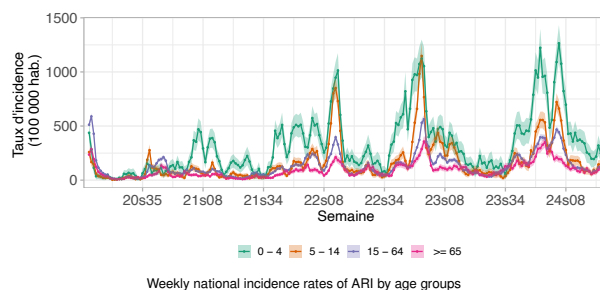
In order to carry out this surveillance, Sentinel general practitioners have been reporting the number of cases of acute respiratory infection (ARI) seen in consultation (or teleconsultation), according to the following definition: **sudden onset of fever (or feeling of fever) and respiratory signs**.

Descriptive data are also collected for each patient, including the results of laboratory diagnostic tests for Covid-19 (RT-PCR or antigenic test).

**Virological surveillance** is also carried out between **October and April** by Sentinel general practitioners and pediatricians, and general practitioners from the [University department of general practice of Rouen](#). Each week, a sample of patients consulting for an ARI is taken, in order to identify different respiratory viruses and monitor their circulation.

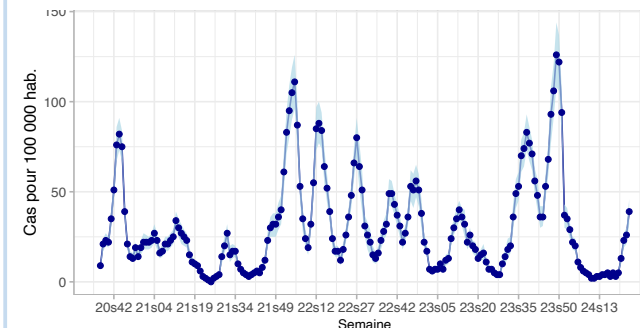
From this clinical and virological information, it is possible to estimate the number of **Covid-19 cases among ARI cases seen in general medical consultations**.

### ARI incidence rates by age groups



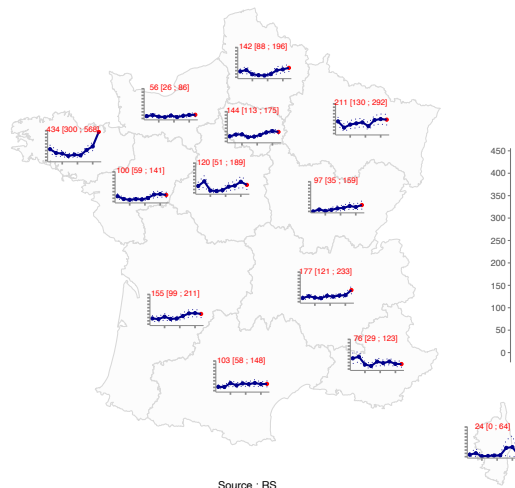
Last week (2024w24), subject to future data consolidation, incidence rates were **increasing in the 15-64 age group** and **stable in other age groups** compared to the previous week.

### Estimated incidence of Covid-19 cases seen in general practice



Last week (2024w24), the incidence rate of Covid-19 cases seen in general consultations for ARI has been estimated at **39 cases per 100,000 population** (95% CI [32; 46]) corresponding to 26,211[21,545; 30,877] new cases. This rate was **increasing among the 15-64 age group** compared to the previous week.

### ARI incidence rates by regions



Weekly ARI incidence rates by regions over the last nine weeks

### Description of IRA cases seen in general practice

Last week (2024w24), **429** cases of ARI were reported by Sentinelles general practitioners. Of these, 343 (80% of reported cases) were described and had the following characteristics:

- **Median age:** 37 years (range from 5 months to 94 years);
- **Male/female sex-ratio:** 0.77 (143/186);
- **Risk factors:** 13% (40/299) had risk factors for complications;
- **Hospitalization:** 0,9% (95% CI [0; 1,9]) of patients were hospitalized after the consultation (3/295).

### In conclusion

Last week (2024w24), subject to future data consolidation:

- the incidence of **ARI** cases seen in general practice was **stable** compared to the previous week. However, there has been an **upward trend over the past month**, particularly in the 15-64 age group. Nevertheless, the incidence of ARI remains at a **low level of activity** (see opposite graphs).
- the incidence of **Covid-19** cases seen in general practice for an ARI was **increasing** compared to the previous week. This increase has been observed over the past four weeks, mainly in the 15-64 age group.

Observed situation in general practice for the week 24 of the year 2024, from 06/10/2024 to 06/16/2024

National incidence rates over the last 3 weeks (per 100,000 inhabitants)	2024w24 (unconsolidated) Incidence rate estimations [95% confidence interval]	2024w23 Incidence rate estimations [95% confidence interval]	2024w22 Incidence rate estimations [95% confidence interval]
Acute respiratory infection	153 [137 ; 169]	132 [119 ; 145]	126 [113 ; 139]
Acute diarrhea	65 [53 ; 77]	61 [51 ; 71]	59 [49 ; 69]
Chickenpox	17 [12 ; 22]	22 [17 ; 27]	17 [12 ; 22]

Regional incidence rates for the week 2024w24 (per 100,000 inhabitants)	Acute respiratory infection Incidence rate estimations [95% confidence interval]	Acute diarrhea Incidence rate estimations [95% confidence interval]	Chickenpox Incidence rate estimations [95% confidence interval]
Auvergne-Rhône-Alpes	177 [121 ; 233]	42 [16 ; 68]	12 [1 ; 23]
Bourgogne-Franche-Comté	97 [35 ; 159]	37 [0 ; 75]	6 [0 ; 18]
Bretagne	434 [300 ; 568]	79 [29 ; 129]	34 [12 ; 56]
Centre-Val de Loire	120 [51 ; 189]	64 [17 ; 111]	4 [0 ; 12]
Corse	24 [0 ; 64]	59 [0 ; 122]	3 [0 ; 16]
Grand Est	211 [130 ; 292]	73 [22 ; 124]	22 [1 ; 43]
Hauts-de-France	142 [88 ; 196]	47 [13 ; 81]	21 [1 ; 41]
Ile-de-France	144 [113 ; 175]	50 [33 ; 67]	16 [6 ; 26]
Normandie	56 [26 ; 86]	12 [0 ; 26]	7 [0 ; 17]
Nouvelle-Aquitaine	155 [99 ; 211]	93 [41 ; 145]	4 [0 ; 15]
Occitanie	103 [58 ; 148]	59 [25 ; 93]	11 [0 ; 33]
Pays de la Loire	100 [59 ; 141]	58 [20 ; 96]	11 [0 ; 24]
Provence-Alpes-Côte d'Azur	76 [29 ; 123]	134 [0 ; 287]	14 [0 ; 35]

## French Sentinel network

### Pierre Louis Institute of Epidemiology and Public Health

UMR-S 1136 (Inserm - Sorbonne Université)

Phone : +33 144 738 435 | E-mail : [sentinelles@upmc.fr](mailto:sentinelles@upmc.fr)

Since 1984, the "réseau Sentinelles" or Sentinelles network has been a research and health monitoring network in primary care (general medicine and paediatrics) in metropolitan France. The participation of physicians is voluntary. Currently, 585 physicians participate in the continuous surveillance activity (546 general practitioners and 39 paediatricians), allowing the production of weekly epidemiological reports.

**Heads of Sentinel Network** : Olivier Steichen, Thierry Blanchon

**Publication** : Yves Dorléans

**Information system & biostatistics** : Clément Turbelin

**Monitoring manager** : Marion Debin, Caroline Guerrisi

Regional branches	Heads
Auvergne-Rhône-Alpes, Bourgogne-Franche-Comté	Marianne Sarazin
Centre-Val de Loire, Pays de la Loire	Thierry Prazuck
Corse	Alessandra Falchi
PACA	David Darmon
Grand Est	Daouda Niaré
Ile-de-France, Hauts-de-France	Mathilde François
Bretagne, Normandie	Marie Pouquet
Nouvelle-Aquitaine, Occitanie	Maryse Lapeyre-Mestre

[See all the team](#) - [Ours partners](#)

### Need more information?

Visit our website :

<https://www.sentiweb.fr/>

### You are a french GP ?

Contact us

<https://www.sentiweb.fr/france/fr/inscrire>

### Envie de participer à la veille sanitaire ?

**covidnet.fr**

Devenez acteur de la surveillance du Covid-19 !

Pas besoin d'être malade pour participer !

Inscrivez-vous sur <https://www.covidnet.fr/>